

SITCHU.

LIVING



LIVE | SHOP | EAT | DRINK | STAY | PLAY

sitchu.com.au

Redefining Family-friendly Living

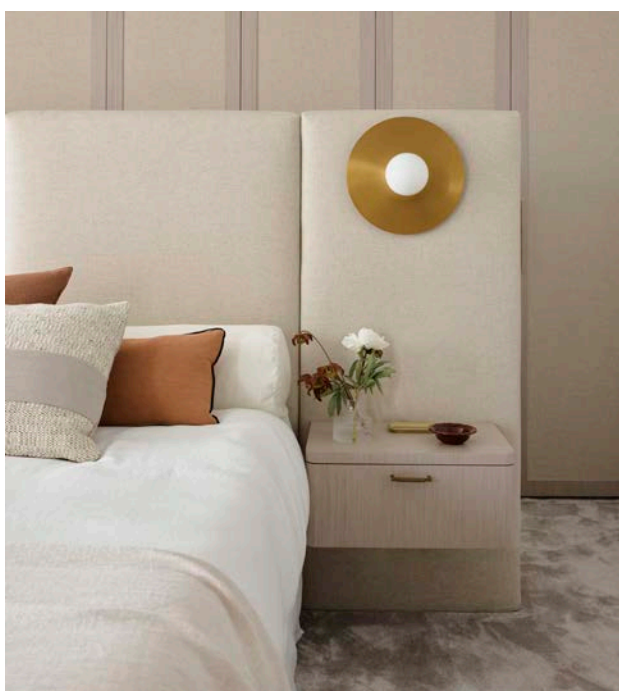
This luxurious home in Sydney's East was thoughtfully designed to bring calm amongst the chaos of family life.



“

“Houses are more than the place where you live. It’s a home. It’s where you raise your children and where you make memories that they will remember for the rest of their lives,”

– Sam Krimotat



In a home that blends beautiful design with touches of glam, First Blush proves that when it comes to family-friendly living, you don’t have to compromise on the finer things in life.

After purchasing a knock-down rebuild along the hilltops of Dover Heights in Sydney’s Eastern Suburb, Sam and Michael built a modern duplex for their growing family. The duo teamed up with Shona McElroy, interior architect and principal of Smac Studio, to create a home that was a reflection of themselves and their three daughters.

“There’s a warrior woman energy in my house with all the girls, so we wanted the space to be very relaxed and a place where we could all feel comfortable to express ourselves and our creativity,” explains Sam. “When you walk in, you get a sense of light and comfort and an easy feeling, which is what we wanted.”

Being brought in during the project’s design phase, Shona was able to work her magic on the interiors to create a four-bedroom home with two living zones, all without making it feel like a tight squeeze.

“Shona is a spatial acrobat; I don’t think there’s a person in the world that can do what she does with space. You walk into my house, and although it is semi-detached, it feels like a full house,” says Sam.

A sense of calm engulfs you when you step through the front door. A palette of soft hues is elevated by natural stone and pops of art. To one side, glass doors lead into the kid’s playroom, while to the other side, you wander into an open-plan living area. To the front of you, a curved staircase with a stunning powder room beneath takes you up to four bedrooms and the main bathroom.

“The powder room is somewhere you can have the most fun in the house. It should be a real reflection of the overall design of your house and what you want your guests to experience,” explains Shona. “We leaned into the feminine energy. The pink throughout the stone, Venetian plaster, panelled mirror, bronze tap ware and a beautiful pendant light from Spence & Lyda.”

An area made for entertaining, the full-size kitchen comes complete with a butler’s pantry, an abundance of storage with bronze handles and a large Palladium marble kitchen island with a ribbed underside.

“Everything needed to be practical because you know how kids are. If it’s impractical, you live in it for three months, and it’ll be destroyed after that. So, everything is as elegant as it can be, and at the same time, really practical,” says Sam.

A bar area was a must for Michael as he wanted to be able to entertain from the dining area. To ensure the spaces blend, Shona put a French mirror behind the bar and added stone to the fireplace and bronze rails along the shelves, all of which spoke to the rest of the interiors.

In the dining area, the lights from Coco Republic create a halo over the dining table while the Vicki Lee artwork crowns the dining space. The herringbone timber floor adds another layer to the home’s elegance.



Upstairs, the bedrooms are a place of solace, with the master room designed with an ensuite, dressing table and a walk-in wardrobe that was skilfully tucked behind the bedhead.

“I wanted it to feel a bit like a fashion boutique where you can go and relax,” says Sam. “It makes such a difference when you purposefully build things to how you live your life. Our lives feel much more relaxed now that we’re in the space where everything was created with a reason and a purpose.”

The main bathroom is the crown jewel, a T-shape design with a double vanity trough sink made of stone with pink and bronze tones. A panel of bronze framed mirrors runs the entire length and height of the wall, while beautiful Murano wall sconces and sheer curtains elevate the space.

“It’s a very harmonious, functional and gorgeous place to be. It’s one of my favourite bathrooms I’ve designed. It feels luxurious, calming and upmarket,” says Shona.

A warm, calming home that brings the family together is everything that Sam and Michael wanted, “I couldn’t be happier; this is my dream come true. Every little detail in this house has been agonised over, and I wouldn’t change a single thing. For me, it’s absolute perfection,” Sam says.

Design: Smac Studio @smac_studio

Styling: Claire Del Mar @clairedelmar

Photography: Anson Smart @smartanson

Words: Margaret Quilter @inky.content

Shop the Style

EMBRACE SCULPTURAL SHAPES, GOLD ACCENTS AND LUXE TEXTILES IN OUR EDIT OF HOMEWARES INSPIRED BY FIRST BLUSH.



- 1. Medium **Bowl**, Amber Onyx, Pieruga Marble, Palmer and Penn, \$4,395.. 2. Patras Alabaster **Pendant**, Coco Republic, \$3,195.
- 3. Fragilis **Bowl**, Black, Menu, Royal Design, \$94. 4. Wilma **Chair**, Cattelan Italia, Misura, Price on Request. 5. Belle **Sofa**, Kett, Cosh Living, \$6,190.
- 6. Funki **Vase**, Asymmetric, Smoke, Louside Roe, \$495 7. Como **Cushion**, Spice, Lumbar, Cover Only, Weave Home, \$79. 8. Ripple Oval **Vase**, Large, Snow, Marmoset Found, \$149. 9. Faceted Brass Drink **Table**, West Elm, \$249. 10. BNC Slide Base **Stool**, Fanuli, Price on Request.